

TERMINATION FLANGE MOUNT 120 WATT



DATA SHEET

PART SERIES: 32-1161

SHEET 1 OF 2
Dwg 32-1161

EN 13-3519
Revision-

FEATURES

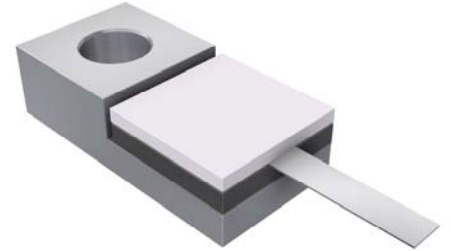
- Tab Launch
- High Power
- Integrated Heat Sink
- Low VSWR
- Easy Installation

APPLICATIONS

- Mobile Networks
- Broadcast
- High Power Amplifiers
- Isolators
- Military
- Instrumentation

GENERAL DESCRIPTION

EMC Technology offers the widest selection of flange mount terminations worldwide. High power flange components offer excellent performance and the convenience of bolt on installation.



ORDERING INFORMATION

Part Identifier: 32-1161

SPECIFICATIONS

1.0 ELECTRICAL

| | |
|--------------------|---|
| Nominal Impedance: | 50 ohms |
| Frequency Range: | DC - 2.0 GHz |
| VSWR: | 1.10:1 Max |
| Input Power CW: | 120 Watts @ 100°C heat sink, derated linearly to zero power and 150°C |
| Peak Power: | 1200 Watts (based on 10us pulse width and 1% duty cycle) |
| DC Resistance: | 50 Ω \pm 5% |

2.0 ENVIRONMENTAL

| | |
|----------------------------|---------------------|
| Operating Temperature: | -55°C to +150°C |
| Non-operating Temperature: | -65°C to +150°C |
| Temperature Coefficient: | +/-200 PPM / °C max |

3.0 MARKING

| | |
|---------------|---|
| Unit Marking: | Logo and Part Number, legibility and permanency per MIL-STD-130 |
|---------------|---|

4.0 QUALITY ASSURANCE

| | |
|-----------------------------------|--------------------------|
| Visual and Mechanical Inspection: | Per 824W107 |
| DC Resistance Check: | 100% DC Resistance Check |
| Data Retention: | Standard |

5.0 PACKAGING

| | |
|---------------------|----------------|
| Standard Packaging: | Tray Packaging |
|---------------------|----------------|

TERMINATION FLANGE MOUNT 120 WATT



DATA SHEET

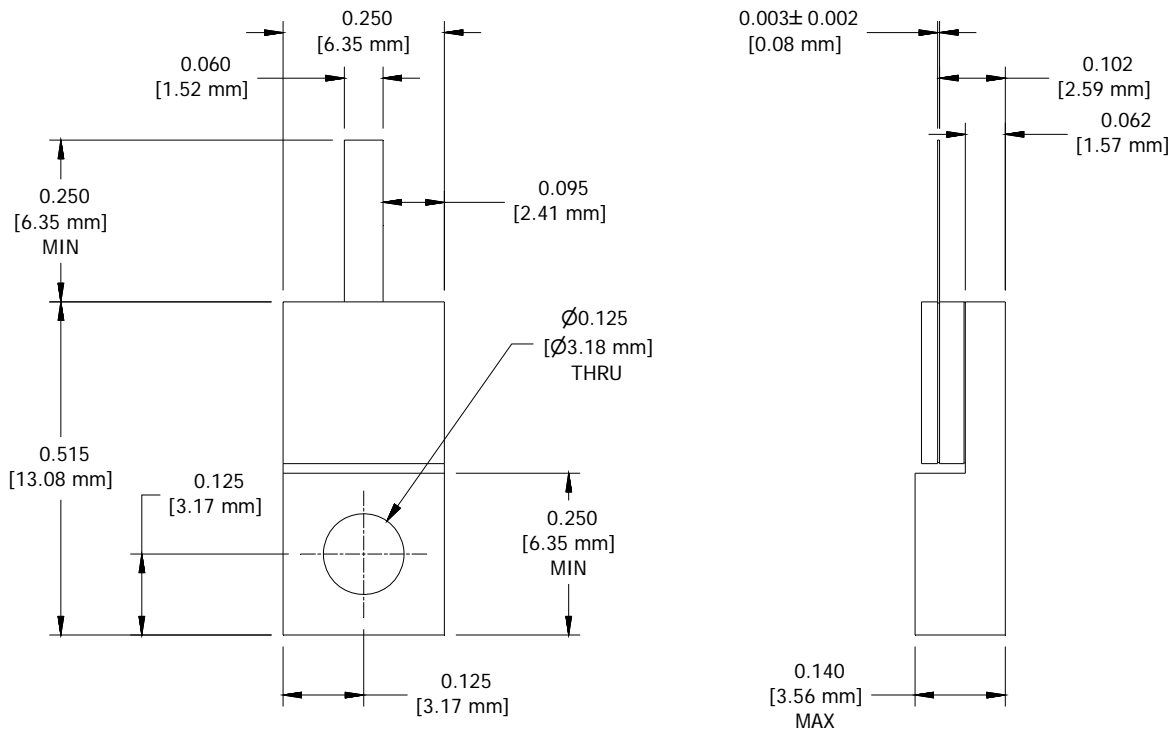
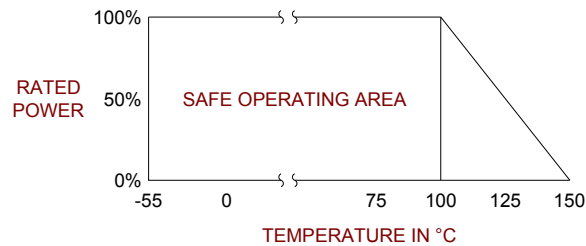
PART SERIES: 32-1161

SHEET 2 OF 2
Dwg 32-1161

EN 13-3519
Revision-

6.0 MECHANICAL

| | |
|---------------------|-----------------------------|
| Substrate Material: | Beryllium Oxide |
| Resistive Film: | Nichrome |
| Cover Material: | Alumina Oxide |
| Tab Material: | Beryllium Copper |
| Tab Finish: | Tin/Lead |
| Flange Material: | Copper |
| Flange Finish: | Nickel |
| Metric Dimensions: | Provided for reference only |



Unless Otherwise Specified: TOLERANCE: X.XX = ± 0.02 X.XXX = ± 0.010